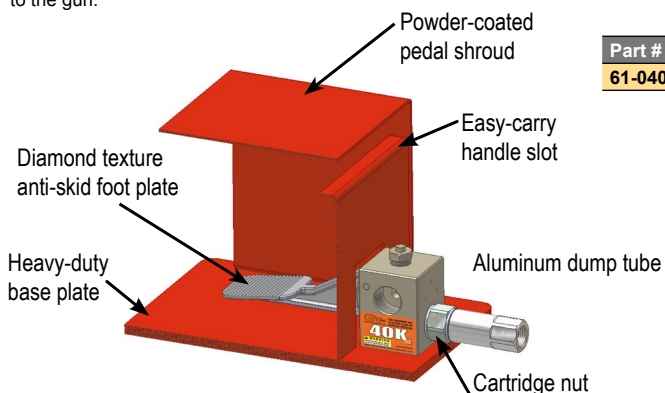


40K Foot Operated Dump Style Control Guns

Typical Foot Gun Hookup These foot operated control valves (foot guns) are designed for smooth reliable operation. They are easily rebuilt in the field in 30 seconds by unscrewing the dump tube, which removes the used valve assembly. The operator then snaps a new cartridge style valve into the dump tube adapter and returns the whole assembly to the gun.



Part #	Description
61-040-003	Complete Foot Style Control Gun

Features:

- Fully enclosed safety shrouds.
- Easy-carry handles.
- Quick-change cartridge overhaul.
- Non-slip diamond texture foot pedals.
- Powder-coated pedal shroud.
- Cartridge nut / dump adapter.
- 9/16" HP connection.
- Aluminum dump tube.
- Heavy-duty base plate.



Easy-Change Cartridge Assembly

The cartridge assembly enables rebuilding of the gun in the field in 30 seconds or less with common tools.

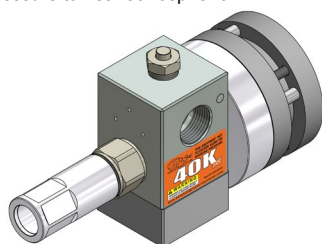


Item	Part #	Description
1	61-010-004	Foot Gun Base Complete Assembly
2	61-010-007	Foot Pedal
3	61-040-002	Dump Adapter 40K Foot Gun
4	61-010-002	Dump Tube
5	10-201-063	C'sink Screw 1/2"-20 x 5/8" Long
6	61-020-005	Foot Pedal Pivot Pin
7	60-040-005	40K Gun Cartridge Assembly
8	61-040-001	Foot Gun Block 40K Assembly
9	61-040-001D	40K psi Safety Decal - Gun Block

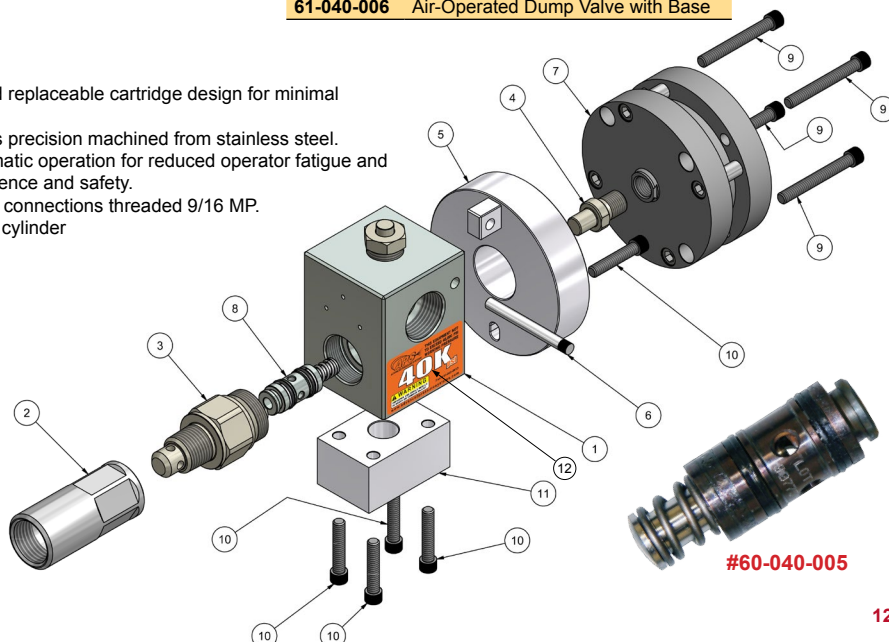
40K Air-Operated Dump Valves The Air-Operated Dump Valve allows an operator to remotely control pressure in cleaning applications of 40,000 psi. When air is sent to the cylinder, the valve closes and allows the system to build pressure. The valve opens when the air is exhausted, reducing system pressure to near atmospheric.

Part #	Description
61-040-007	Complete Air-Operated Dump Valve
61-040-006	Air-Operated Dump Valve with Base

- 30-second field replaceable cartridge design for minimal downtime.
- All components precision machined from stainless steel.
- Remote pneumatic operation for reduced operator fatigue and added convenience and safety.
- Inlet and outlet connections threaded 9/16 MP.
- Heavy-duty air cylinder



ITEM	QTY	PART #	DESCRIPTION
1	1	61-040-001	40K Foot Gun Block (Assembly)
2	1	61-010-002	Dump Tube
3	1	61-040-002	Dump Adapter - 40K Foot Gun
4	1	61-040-008	Plunger - 40K Air Actuator Valve
5	1	61-040-011	Mounting Plate - 40K Air Actuator
6	1	61-020-005	Pivot Pin - Foot Gun
7	1	61-001-004	Parker Air Actuator Cylinder
8	1	60-040-005	40K Cartridge Assembly
9	4	10-001-200	SHCS - 2" Long SS
10	5	10-001-1125	SHCS - 1-1/8" Long
11	1	61-001-002	SPACER BLOCK
12	2	61-040-001D	40K psi Safety Decal - Gun Block



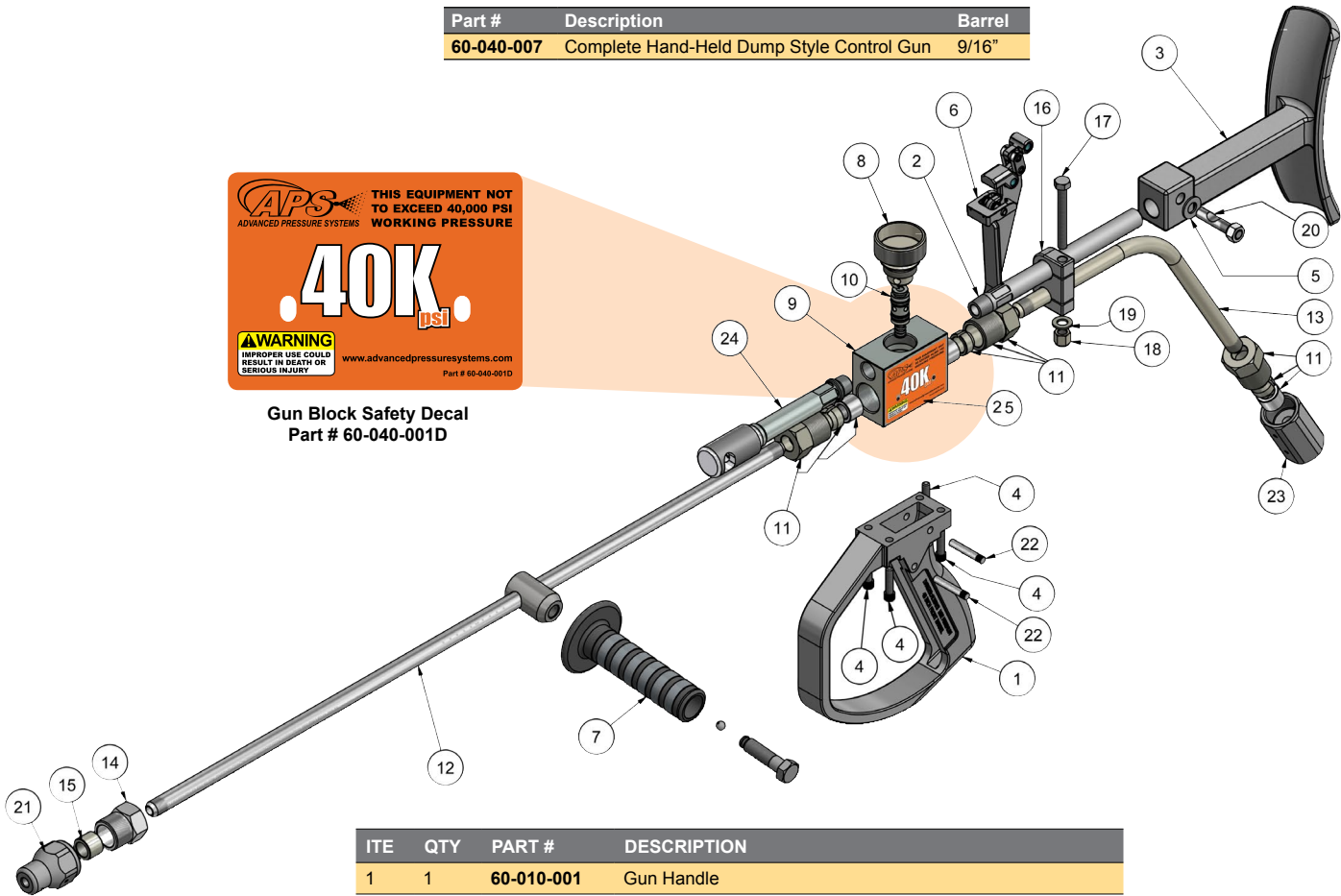
40K Hand-Held Dump Style Control Guns

- These guns are the new standard and are built tough for the demands of today's contracting environment.
- These control guns incorporate many **superior features**.
- They are **lightweight** and are easy to overhaul in the field using a cartridge which is interchangeable with Jetstream guns of the same pressure rating.
- The shoulder stock and handgrip are both adjustable and the trigger has a safety lock to prevent accidental discharge.
- Front barrels are 48" long with standard 9/16" MP size.

Part #	Description	Barrel
60-040-007	Complete Hand-Held Dump Style Control Gun	9/16"



Gun Block Safety Decal
Part # 60-040-001D

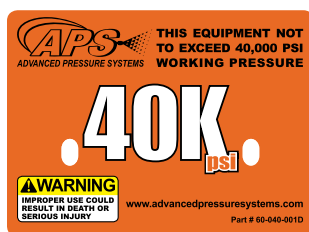


ITE	QTY	PART #	DESCRIPTION
1	1	60-010-001	Gun Handle
2	1	60-010-009	Shoulder Stock Tube
3	1	60-010-003	Shoulder Stock
4	4	10-001-100	SHCS 1/4"-20 x 1" Long SS
5	1	10-010-001	3/8" SS Plain Washer
6	1	60-010-061	Trigger & Cam Assy. w/Safety Latch
7	1	60-020-008	9/16" MP/HP QUICK ADJUST FRONT HANDLE ASSEMBLY
8	1	60-040-006	Cartridge Nut
9	1	60-040-001	Hand Gun Block 40K
10	1	60-040-005	Cartridge Assembly 40K
11	3	22-008-003	9/16" HP Anti-Vibe Collet Assembly
12	1	22-016-048	9/16" HP Nipple 48" Long
13	1	60-040-008	Gun Inlet Tube 40K
14	1	22-003-003	Gland Nut 9/16" HP
15	1	22-002-003	Collar 9/16" HP
16	1	60-020-012	Inlet Tube Clamp
17	1	10-017-250	Clamp Bolt 5/16-18 x 2-1/2" Long
18	1	10-100-003	5/16" Nylon Lock Nut
19	1	10-010-002	Flat Washer 5/16" SS
20	1	60-010-017	Shoulder Stock Cam Stud (incl. Nylon Lock Nut)
21	1	17-027-000	Nozzle Holder 40K
22	2	60-010-021	Trigger Pivot Pin
23	1	22-011-113	9/16" HP Coupling
24	1	60-010-057	Dump Tube Assembly
25	2	60-040-001D	40K psi Safety Decal - Gun Block

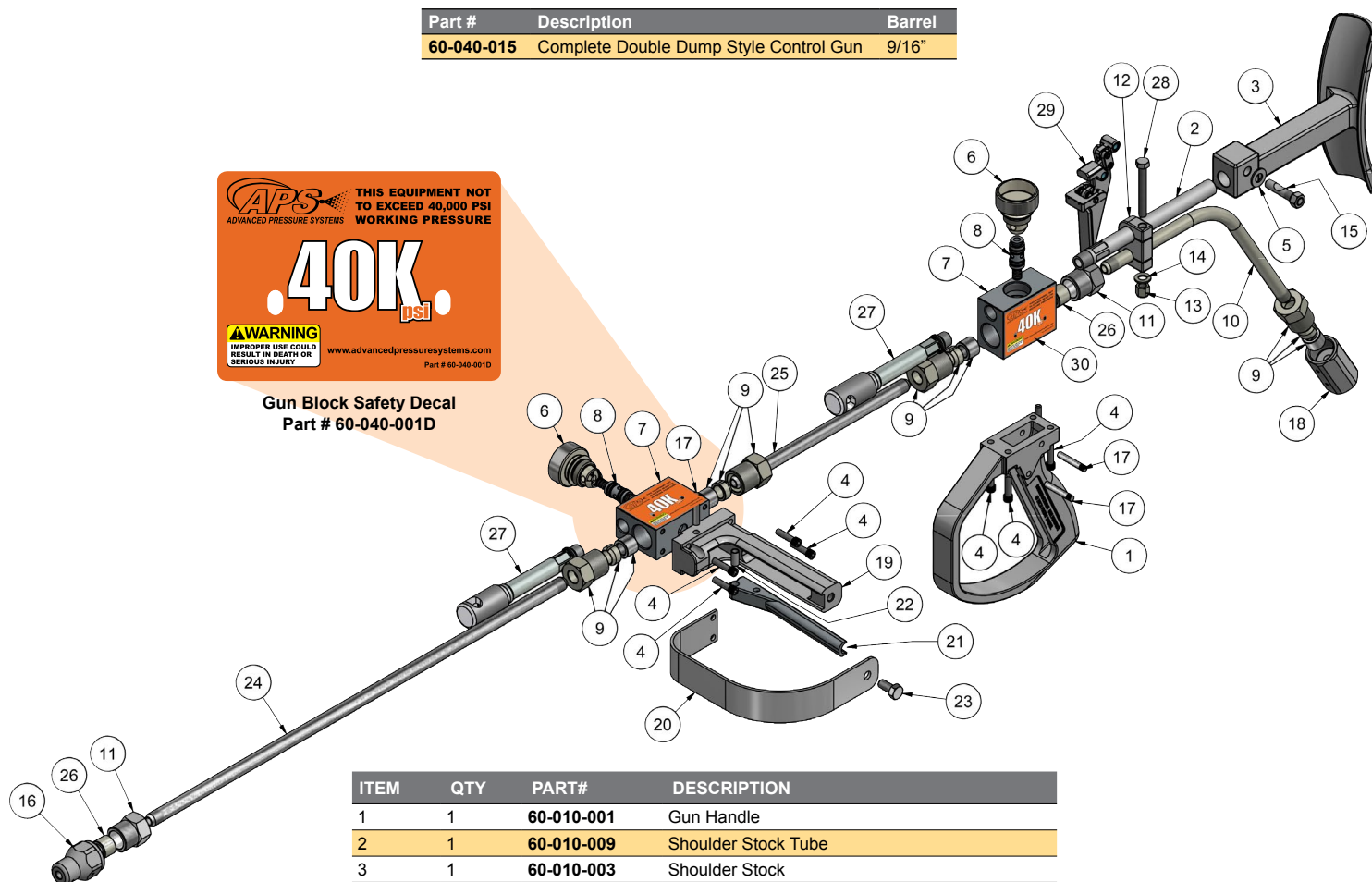
40K Double Dump Gun

There is an increasing demand for the **extra safety** of control guns which incorporate dual dump ports. The Advanced Pressure Systems **40K Double Dump Control Guns** feature this added security together with the ergonomic advantages and operator comfort of a specially designed front handle.

Part #	Description	Barrel
60-040-015	Complete Double Dump Style Control Gun	9/16"

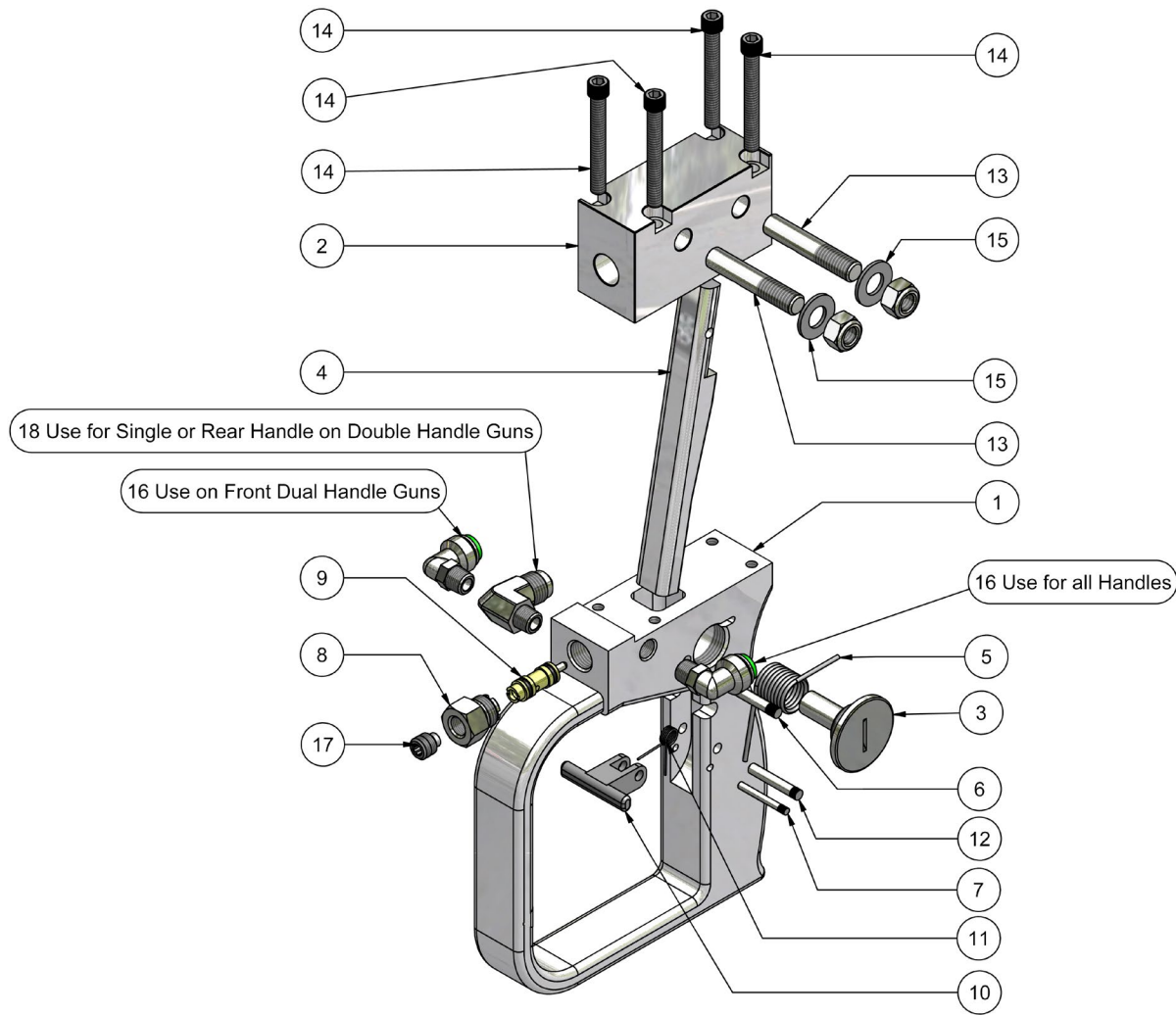


Gun Block Safety Decal
Part # 60-040-001D



ITEM	QTY	PART#	DESCRIPTION
1	1	60-010-001	Gun Handle
2	1	60-010-009	Shoulder Stock Tube
3	1	60-010-003	Shoulder Stock
4	8	10-001-100	SHCS 1/4"-20 x 1" Long
5	1	10-010-001	3/8" SS Washer
6	2	60-040-006	"Handi Change" Cartridge Nut - 40k
7	2	60-040-001	40K Gun Block
8	2	60-040-005	40K Cartridge Assembly
9	4	22-008-003	9/16" Anti-Vibe Gland Nut and Collar Assy.
10	1	60-040-008	Inlet Tube 40K
11	2	22-003-003	Gland Nut
12	1	60-020-012	Inlet Tube Clamp
13	1	10-100-003	Nylon Locknut 5/16"-18 SS
14	1	10-010-002	Flat Washer 5/16" SS
15	1	60-010-017	Shoulder Stock Cam Stud
16	1	17-027-000	Nozzle Holder, 9/16" HP x 3/8"-24 UNF
17	3	60-010-021	Trigger Pivot Pin
18	1	22-011-113	Coupler 9/16"HP 40K (w/o Gland Nut & Collar)
19	1	60-050-002	Double Dump Gun Front Handle
20	1	60-050-005	Double Dump Trigger Guard
21	1	60-050-003	Double Dump Trigger
22	1	60-010-022	Pivot Pin Bushing
23	1	10-016-075	Bolt, Hex. Head 3/8"-16 X 3/4" SS
24	1	22-016-036	Nipple 9/16" HP/LH x 36"
25	1	22-016-010	Nipple 9/16" HP/LH x 10"
26	2	22-002-003	9/16" HP Collar
27	2	60-010-057	Dump Tube Assembly
28	1	10-017-250	5/16"-18 SS Bolt 2-1/2" Long
29	1	60-010-061	Trigger & Cam Assy. w/Safety Latch
30	4	60-040-001D	40K psi Safety Decal - Gun Block

#60-073-010 and 60-073-015 Air Controlled 40K Control Gun Exploded View

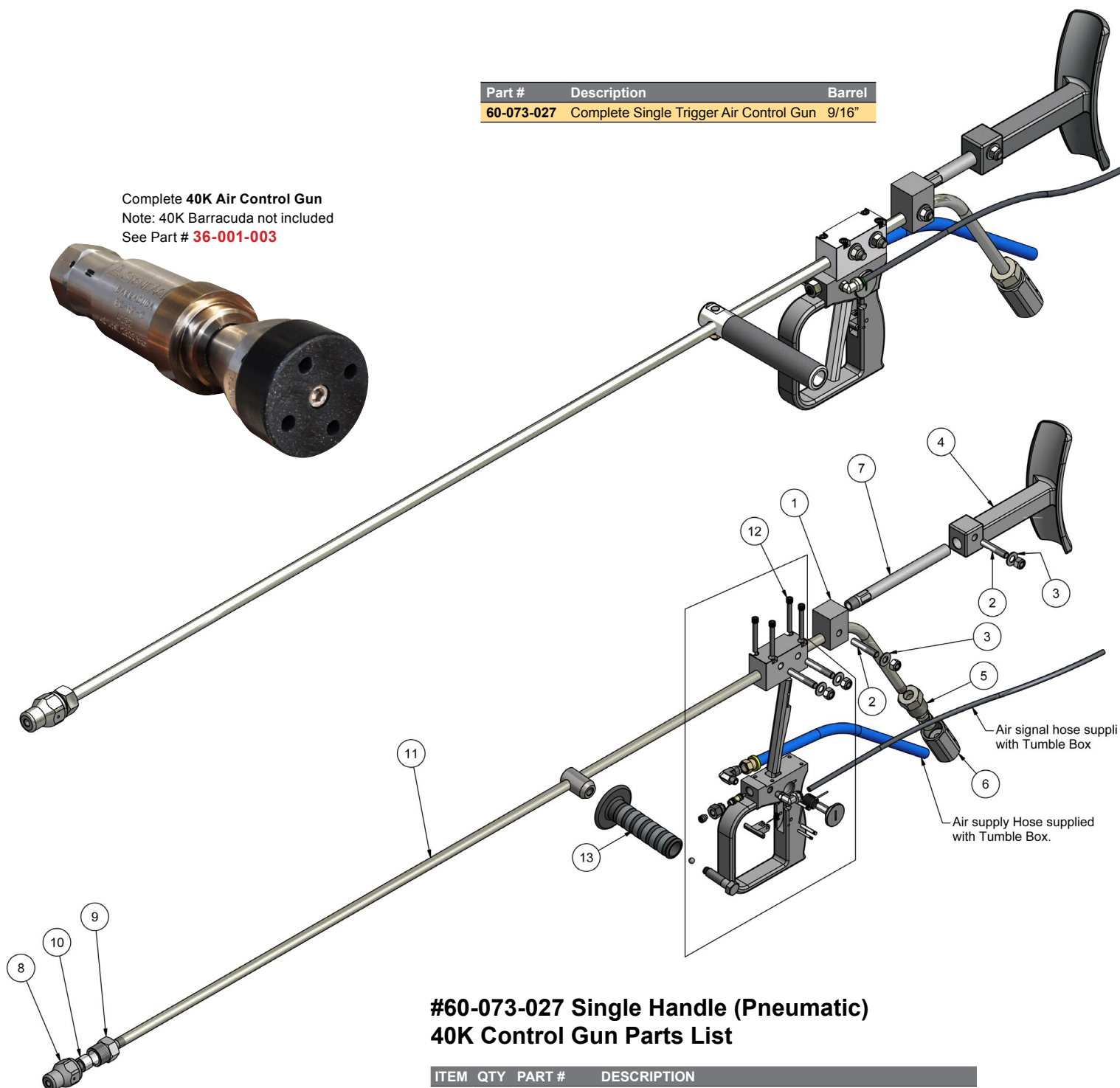


#60-073-010 Air Controlled 40K
Control Gun Parts List

ITEM	QTY	PART #	DESCRIPTION
1	1	60-073-001	Air Control Gun Handle
2	1	60-073-002	Air Control Gun - Barrel Block
3	1	60-073-003	Trigger Spring Mandrel
4	1	60-073-004	Trigger
5	1	60-073-005	Trigger Spring
6	1	60-073-006	Trigger Pivot Pin
7	1	60-073-007	Safety Latch Stop
8	1	60-073-008	Cartridge Valve Retainer Nut
9	1	60-073-009	Poppet Cartridge Valve
10	1	60-030-003	Safety Latch
11	1	60-030-006	Safety Latch Spring
12	1	60-073-011	Safety Latch Pivot Pin
13	2	60-073-012	Cam Stud - 9/16" Barrel (incl. Nylon Lock Nut)
14	4	10-001-200	1/4"-20 SHCS x 2" Long
15	2	10-010-001	3/8" Plain Washer SS
16	2	60-073-013	Prestolok Compact Elbow
17	2	15-118-000	1/8"NPT x Socket Head Plug
18	1	60-073-018	1/8"NPT x 3/8" JIC Prestolok Compact Elbow

40K Pneumatic Dual & Single Handle Control Guns

These guns, combined with the StoneAge Barracuda rotating nozzle, can be used in place of the more costly rotary barrel guns (e.g. COBRA) for most applications including surface preparation. These guns are used to send the air signal to a tumble box, which controls the flow of high pressure water. The gun does not have any high pressure seals, valves or cartridges to maintain or replace. Single or dual trigger configurations are available. Working pressures to 40K. Uses the same air hoses as the rotary gun.



Complete **40K Air Control Gun**
Note: 40K Barracuda not included
See Part # **36-001-003**

#60-073-027 Single Handle (Pneumatic) 40K Control Gun Parts List

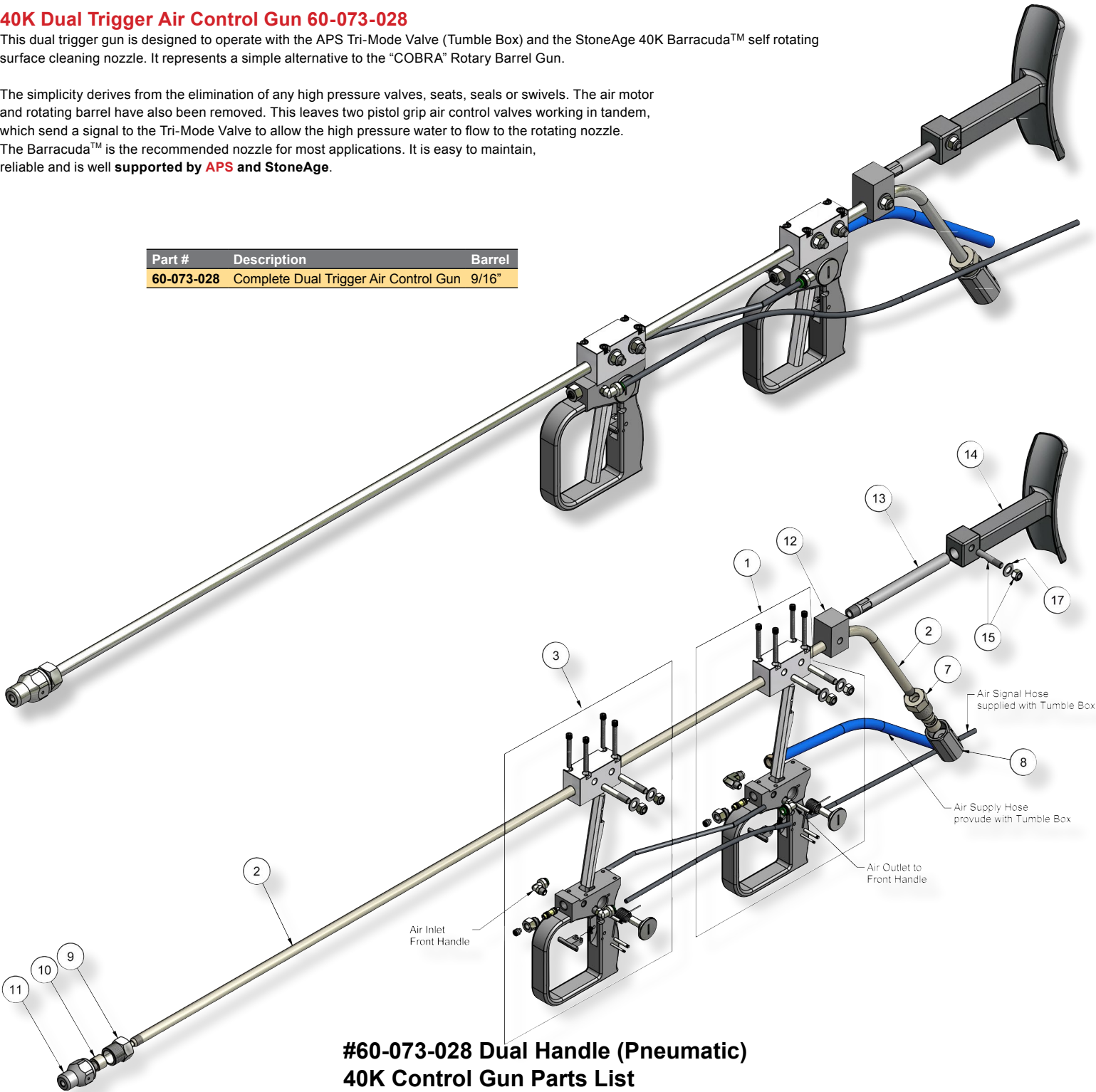
ITEM	QTY	PART #	DESCRIPTION
1	1	60-073-014	Shoulder Stock Mounting Block
2	2	60-010-017	Shoulder Stock Cam Stud (incl. Nylon Lock nut)
3	2	10-010-001	3/8" Plain Washer SS.
4	1	60-010-003	Shoulder Stock
5	1	22-008-003	9/16" Anti Vibration Collet Assembly
6	1	22-011-113	9/16" HP 40K Coupler Without Gland Nut & Collar
7	1	60-010-009	Shoulder Stock Tube
8	1	17-027-000	Nozzle Holder 9/16"HP x 3/8"-24 UNF
9	1	22-003-003	9/16" HP Gland Nut
10	1	22-002-003	9/16" HP Collar
11	1	60-073-016	9/16" HP Air Gun Barrel 40K
12	1	60-073-015	Pneumatic Control Gun - Single/Rear Assembly
13	1	60-020-008	9/16" MP/HP QUICK ADJUST FRONT HANDLE ASSEMBLY

40K Dual Trigger Air Control Gun 60-073-028

This dual trigger gun is designed to operate with the APS Tri-Mode Valve (Tumble Box) and the StoneAge 40K Barracuda™ self rotating surface cleaning nozzle. It represents a simple alternative to the “COBRA” Rotary Barrel Gun.

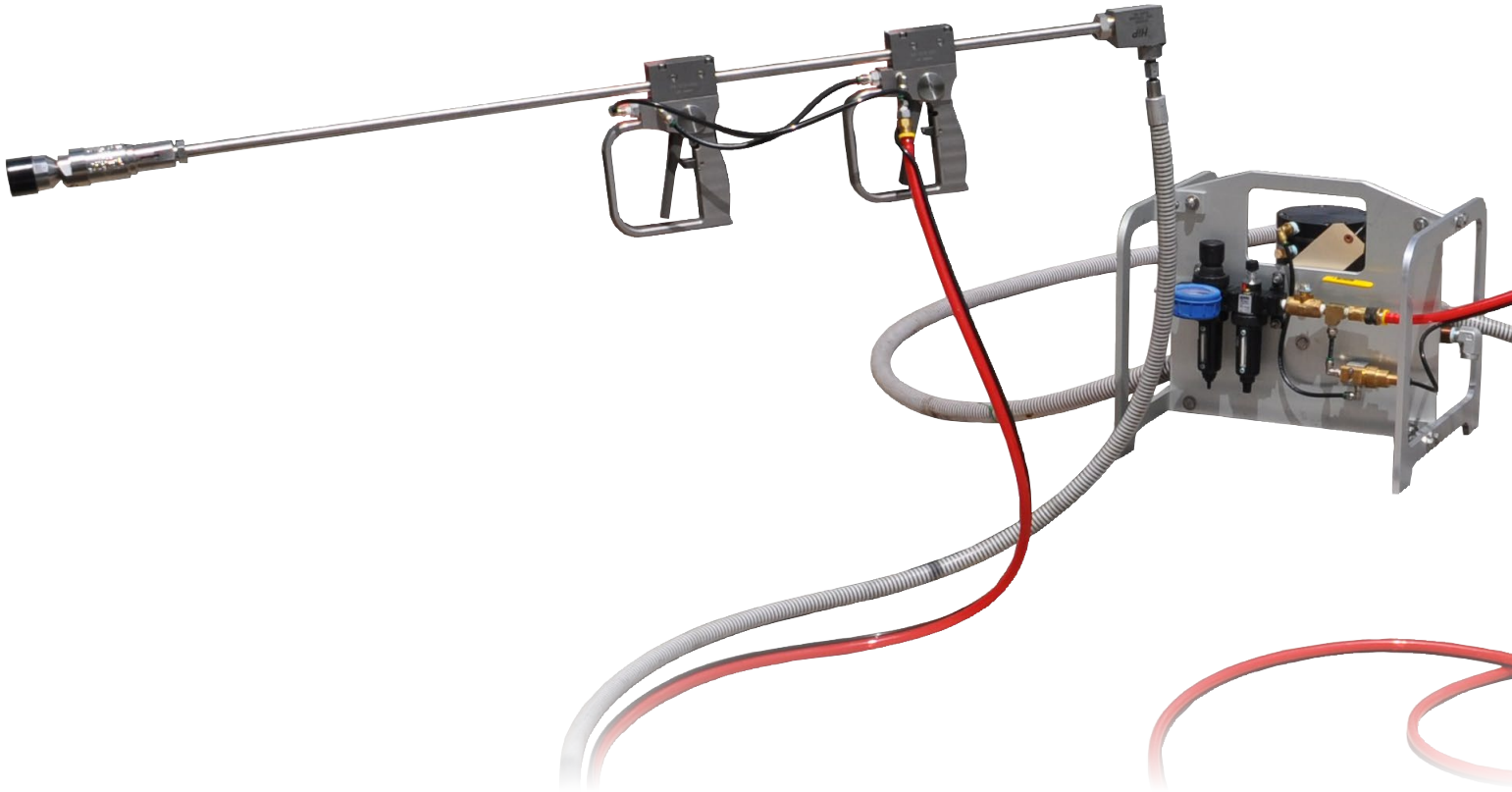
The simplicity derives from the elimination of any high pressure valves, seats, seals or swivels. The air motor and rotating barrel have also been removed. This leaves two pistol grip air control valves working in tandem, which send a signal to the Tri-Mode Valve to allow the high pressure water to flow to the rotating nozzle.

The Barracuda™ is the recommended nozzle for most applications. It is easy to maintain, reliable and is well supported by **APS** and **StoneAge**.



#60-073-028 Dual Handle (Pneumatic)
40K Control Gun Parts List

ITEM	QTY	PART #	DESCRIPTION
1	1	60-073-015	Pneumatic Gun Handle (Rear)
2	1	60-073-016	9/16" Barrel for 40K Dual Handle pneumatic Gun
3	1	60-073-010	Pneumatic Gun Handle (Front)
7	1	22-008-003	9/16" Anti Vibration Collet Assembly
8	1	22-011-113	9/16" HP Coupler without Gland Nut & Collar
9	1	22-003-003	9/16" HP Gland Nut
10	1	22-002-003	9/16" HP Collar
11	1	17-027-000	Nozzle Holder 9/16" HP x 3/8"-24 UNF (40K Dump Gun)
12	1	60-073-014	Shoulder Stock Mounting Block
13	1	60-010-009	Shoulder Stock Tube
14	1	60-010-003	Shoulder Stock
15	1	60-010-017	Cam Stud (Incl. Nylon Lock Nut)
16	1	10-100-002	3/8"-16 Nylon Lock Nut
17	1	10-010-001	3/8" Plain Washer



The 40K “TRI-MODE VALVE” (commonly called a Tumble Box) has been developed after extensive research aimed at identifying the features that contractors and end users needed most. The air side incorporates a robust easy to operate shut off valve, a large easy to read horizontally mounted gauge, which is protected by a heavy rubber buffer. The shuttle valve is a **simple cartridge type design**, which is easy to service and replace.

Air Side



Part #	Description
60-070-076	Complete Tumble Box

Cartridge Overhaul In less than a minute!



#60-070-111

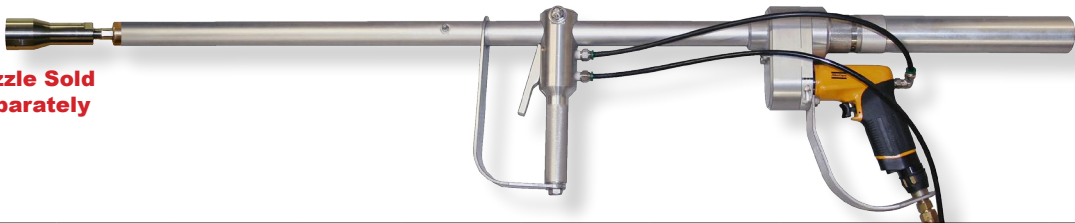


Water Side

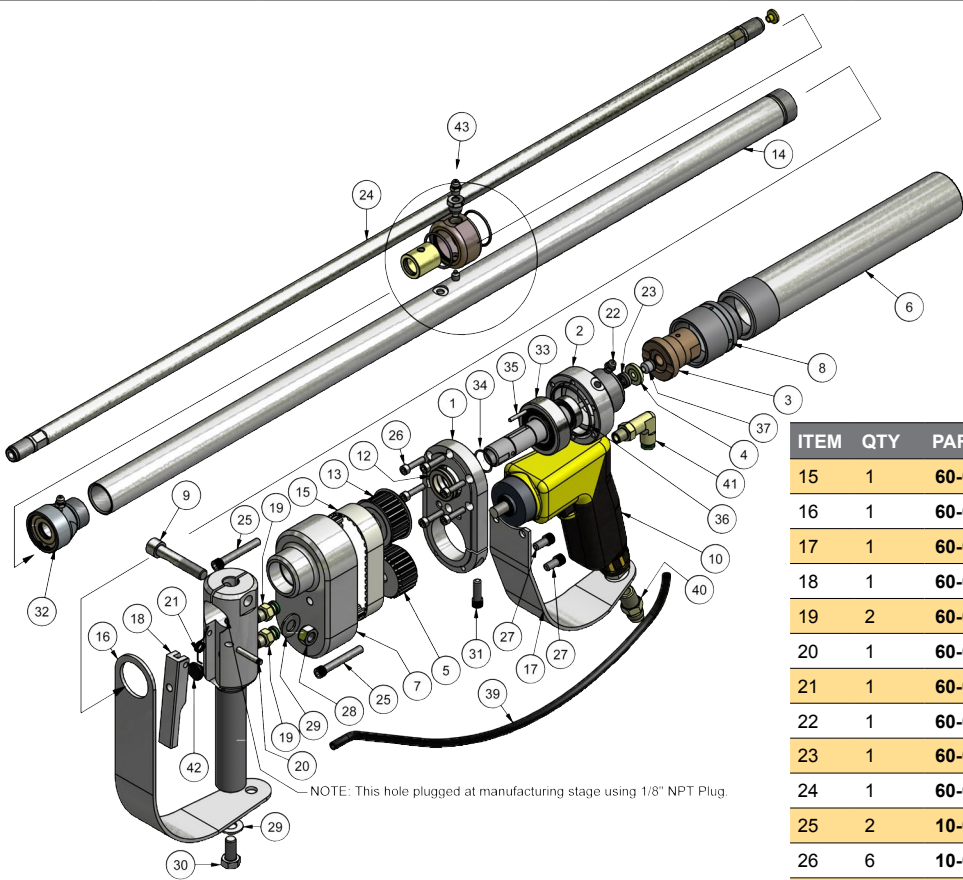
CONTROL GUNS

The **APS COBRA** is an **air-operated control gun** with a rotating barrel. The simple, **robust design** combined with the high quality of manufacture, makes this the perfect tool for **Ultra High Pressure Jetting** applications. When used together with our **Tri-Mode Control Valve**, the combination is the most cost effective and easy to use and maintain system on the market. It is ideal for the removal of paint and corrosion leaving a white metal finish, which is ready for coating.

Nozzle Sold Separately



Part #	Barrel Length	Overall Length	Rotation Speed	Weight	Air Demand		Operating Pressure	Max. Flow	Required Inlet Connection	Nozzle Connection
	In.	In.	RPM	Lbs.	Pressure PSI	Volume CFM	PSI	GPM		
60-072-001	36"	46"	1700-3000	10.75	90	22	40,000	7	3/8" HP Female	9/16" HP Button
60-072-062	48"	58"	1700-3000	12.3	90	22	40,000	7	3/8" HP Female	9/16" HP Button



ITEM	QTY	PART #	DESCRIPTION
1	1	60-072-002	40 K COBRA - Back Plate
2	1	60-072-004	40K COBRA - Swivel Bearing Housing
3	1	60-072-005	40K COBRA - Swivel Inlet Adapter
4	1	60-072-006	40K COBRA - Swivel Seal Back Up Ring
5	1	60-072-007	40K COBRA - Pulley, Drill Motor. Alum. 26 Pitch Drive
6	1	60-072-008	40K COBRA - Hose Protector
7	1	60-072-009	40K COBRA - Belt Drive Cover
8	1	60-072-010	40K COBRA - Bearing Retaining Cap
9	1	60-072-012	40K COBRA - Cam Stud/Barrel Shroud
10	1	60-072-013	40K COBRA - Barrel Shroud
11	1	60-072-015	40K COBRA - Front Handle
12	1	60-072-016	Grease Seal
13	1	60-072-020	40K COBRA - Timing/Drive Sprocket
14	1	60-072-019	40K COBRA - Barrel Shroud

ITEM	QTY	PART #	DESCRIPTION
15	1	60-072-022	Timing/Drive Belt
16	1	60-072-027	40K COBRA - Air Motor Trigger Guard
17	1	60-072-028	40K COBRA - Front Handle Trigger Guard
18	1	60-072-025	40K COBRA - Trigger, Front handle
19	2	60-072-031	Connector - 1/8" NPT Prestolok
20	1	60-072-032	40K COBRA - Front Handle Trigger Pin
21	1	60-072-033	40K COBRA - Front Handle Trigger Pin
22	1	60-072-023	Grease Zerk
23	1	60-072-026	Oil/Grease Seal
24	1	60-072-035	40K COBRA - Barrel 9/16"-18 UHM B/E x 34-3/16" Long
25	2	10-001-175	SHCS 1/4"-20 x 1-3/4" Long
26	6	10-008-075	SHCS 10-32 x 3/4" Long
27	2	10-001-050	SHCS 1/4"-20 x 1/2" Long
28	1	10-100-002	3/8"-16 Nylon Lock Nut
29	2	10-010-001	Flat washer 3/8" SS
30	1	10-016-075	Hex. bolt, 3/8"-16 x 3/4" Long SS
31	1	10-003-075	SHCS 1/4"-28 x 3/4" Long
32	1	60-072-070	Front Bearing Assembly
33	1	60-072-141	40K COBRA - Shaft/Bearing Assembly
34	1	60-072-037	Spiral Retaining Clip
35	1	60-072-038	Keyway Pin
36	1	30-002-031	O-Ring, 2-013 Buna 70 Dur.
37	1	60-072-049	40K COBRA - Swivel Shaft Seal
38	1	60-072-041	40K Brass Button Seal J/S
39	1	60-072-040	1/4" Air Tubing
40	1	60-072-042	Fitting 3/8" JIC x 1/4" NPT
41	1	60-072-039	Swivel elbow - 1/4" x 1/8" NPT Prestolok
42	1	60-072-034	Ribber Insert for Front Trigger
43	1	60-072-024	Center Barrel Bearing Assembly